

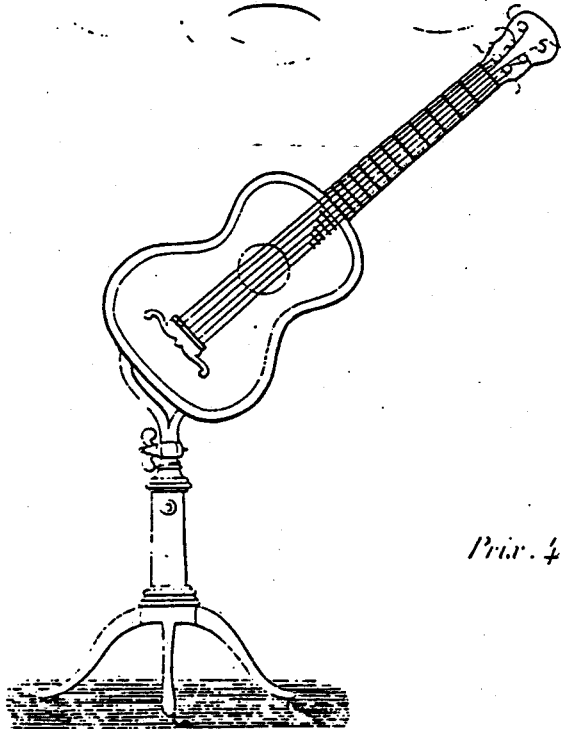
LE FANDANGO

POUR

Guitare,

PAR

D. AGUADO.



Op. 16.

Écrit par l'auteur

Prix. 4^l. 50.

À PARIS, chez l'auteur, boulevard du TEMPLE, 105, en face la guitare, Place des Mathéris, N^o 3

et chez les principaux Libraires de Musique.

10.

4ª Corda

1

2

3

1

2

1

2

1

2

В ШКОЛЬ

First musical staff, treble clef, key signature of one sharp (F#). The staff contains a sequence of chords and melodic lines. Fingerings 1, 2, 4, and 5 are indicated above notes. A circled 2 is at the end of the staff.

Second musical staff, treble clef, key signature of one sharp (F#). The staff contains a sequence of chords and melodic lines. Fingerings 1, 2, 3, and 4 are indicated above notes.

Third musical staff, treble clef, key signature of one sharp (F#). The staff contains a sequence of chords and melodic lines. Fingerings 2, 4, 3, 2, 4, and 2 are indicated below notes. A circled 2 is at the end of the staff.

Fourth musical staff, treble clef, key signature of one sharp (F#). The staff contains a sequence of chords and melodic lines. Fingerings 2, 3, 3, 4, and 3 are indicated above notes. A circled 2 is above a note.

Fifth musical staff, treble clef, key signature of one sharp (F#). The staff contains a sequence of chords and melodic lines. Fingerings 4 and 3 are indicated below notes.

Sixth musical staff, treble clef, key signature of one sharp (F#). The staff contains a sequence of chords and melodic lines. Fingerings 3 and 4 are indicated below notes.

Seventh musical staff, treble clef, key signature of one sharp (F#). The staff contains a sequence of chords and melodic lines. Fingerings 2 and 1 are indicated above notes. A circled 2 is above a note.

A handwritten musical score consisting of seven staves of music. The notation is written in black ink on a white background. The first staff begins with a treble clef and a key signature of one sharp (F#). The music is written in a style that suggests a piano or guitar accompaniment, with many notes beamed together in groups. The second staff continues the melody and includes a circled '1' above a note and a circled '2' below a note. The third staff features a circled '2' below a note. The fourth staff shows a change in key signature to two sharps (F# and C#). The fifth staff contains several measures with notes marked with a 'k' above them. The sixth and seventh staves feature prominent triplets, each marked with a circled '3' above the notes. The overall style is that of a personal manuscript or a working draft for a piece of music.

First musical staff, featuring treble clef, a key signature of one flat (B-flat), and a common time signature. The staff contains a melodic line with eighth-note triplets and a bass line with quarter notes. The first triplet is marked with a '3' above it, and the second with a '4' above it. The key signature changes to one sharp (F#) in the second measure.

Second musical staff, continuing the melody and bass line. The key signature remains one sharp (F#). The melodic line features eighth-note patterns, and the bass line consists of quarter notes.

Third musical staff, showing a continuation of the musical piece. The melodic line has eighth-note triplets, and the bass line has quarter notes. The key signature is one sharp (F#).

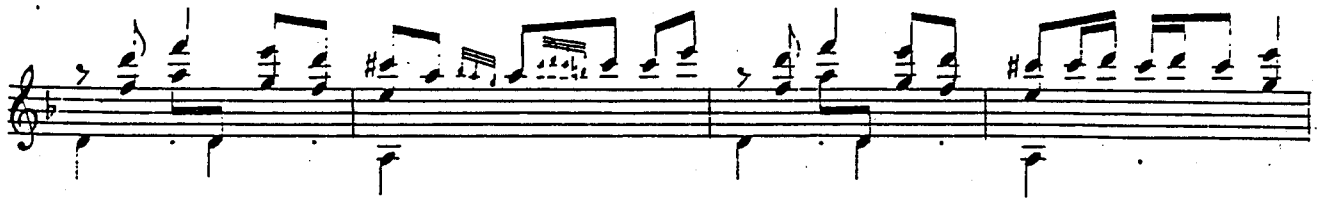
Fourth musical staff, featuring a melodic line with eighth-note triplets and a bass line with quarter notes. The key signature is one sharp (F#).

Fifth musical staff, continuing the melody and bass line. The key signature is one sharp (F#).

Sixth musical staff, featuring a melodic line with eighth-note patterns and a bass line with quarter notes. The key signature is one sharp (F#).

Seventh musical staff, showing the final part of the musical piece. The melodic line has eighth-note patterns, and the bass line has quarter notes. The key signature is one sharp (F#).

This image displays a handwritten musical score consisting of eight staves of music. The notation is written in black ink on a white background. Each staff begins with a treble clef and a key signature of one flat (B-flat). The music is written in a style characteristic of the late 19th or early 20th century, featuring a variety of note values including eighth, sixteenth, and thirty-second notes, as well as rests. The first staff contains a melodic line with many slurs and ties. The second staff continues this melodic line with similar phrasing. The third staff introduces a more complex texture with multiple voices, including some notes with stems pointing downwards. The fourth and fifth staves show a dense, rhythmic texture with many beamed notes and slurs. The sixth staff continues this dense texture with some changes in note values. The seventh staff features a melodic line with many slurs and ties, similar to the first staff. The eighth staff concludes the piece with a melodic line and some final chords. The overall impression is that of a single melodic line with a complex accompaniment, possibly for a piano or violin.



A musical staff in treble clef with a key signature of one sharp (F#). It contains a series of rapid sixteenth-note passages, starting with a melodic line and followed by a more rhythmic accompaniment. The notes are densely packed, creating a sense of speed and intensity.

A musical staff in treble clef with a key signature of one sharp (F#). It features a melodic line consisting of eighth notes, some with ties, and a supporting bass line. The rhythm is steady and rhythmic.

A musical staff in treble clef with a key signature of one sharp (F#). It begins with the instruction "ritandando." and contains a melodic line with dotted rhythms. The tempo then changes to "Allegro." as indicated by the text on the right side of the staff.

A musical staff in treble clef with a key signature of one sharp (F#). It features a melodic line with eighth notes and a rhythmic accompaniment consisting of eighth notes. The texture is light and rhythmic.

A musical staff in treble clef with a key signature of one sharp (F#). It features a melodic line with eighth notes and a rhythmic accompaniment consisting of eighth notes. The texture is light and rhythmic.

A musical staff in treble clef with a key signature of one sharp (F#). It features a melodic line with eighth notes and a rhythmic accompaniment consisting of eighth notes. The texture is light and rhythmic.

A musical staff in treble clef with a key signature of one sharp (F#). It features a melodic line with eighth notes and a rhythmic accompaniment consisting of eighth notes. The texture is light and rhythmic.

